



Introducing “Darren”

A fast and reliable membrane switch panel test system.

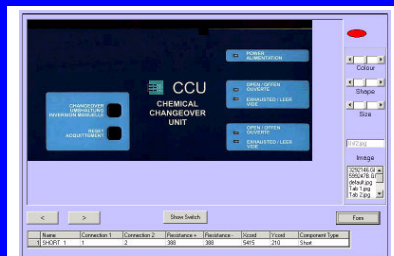
- Measures switch resistance.
- Checks LED operation and works out polarity automatically.
- Picture of actual circuit on screen.
- No special wiring required
- Faults identified for rework
- Printed results sheets
- Saves results to a PC
- Fast, accurate testing saves time and money
- Colour coded interface



Darren is a PC based Membrane switch panel testing system, which has been designed with accuracy, ease of use, speed and quality in mind.

The Windows* software is user friendly, using the standard interface that you are familiar with. The test results are displayed clearly on the screen.

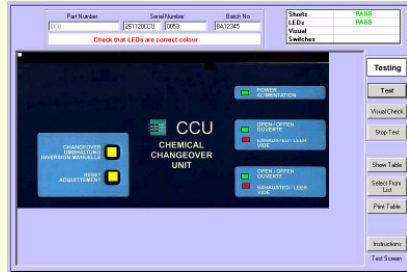
Name	Connections	Connections	Resistance	Resistance	Speed	Speed	Component Type	Component Type
LED-1	1	2	5	500	1340	6000	3700	LED -
LED-2	2	3	5	600	1344	1600	3600	LED -
LED-3	2	3	5	500	1344	1600	3600	LED -
LED-4	2	3	5	504	1344	1600	3600	LED -
LED-5	2	3	5	504	1344	1600	3600	LED -
LED-6	2	3	5	504	1344	1600	3600	LED -
Switch On 1	10	12	500	500	2010	3400	Switch	Switch
Switch Off 2	10	11	480	480	2000	2740	Switch	Switch



You also have the option of displaying the results on a picture of your panel. This allows quick rework and feedback to production of the nature and position of the faults. All results are stored in a standard database format allowing production and quality control to record test results and to analyse them for AQL.

Testing

The test interface is ergonomically designed. Darren has a footswitch and audible feedback so that you can keep your hands and eyes on the panel you are testing. You only need to look at the screen if there is a fault as the sound tells you where you are in a test and what the result is. Darren will comfortably test between 500 and 1000 average panels in a day.



Test Specification

Connections:

2 off 37 D type for connection to PC (on rear panel)
1 off 34 way IDC for connection to test jig (on front panel)

I/O lines:

32 Lines suitable for input, output or LED drive.

Resistance ranges (Auto selected):

0 to 1 K Ohms
0 to 30 K Ohms
0 to 300 K Ohms

Insulation Check:

>2M Ohms

Accuracy:

+/- 5%

LED's:

Only the maximum number of connections limits the maximum number of LED's driven. Maximum current 30ma

Test voltage:

9 Volts



Footswitch:

A socket is fitted for a footswitch (supplied), shorting out the pair of contacts can be used to advance through tests.

PC Interface:

Tester supplied with a PCI card. One free slot required.

PC Software:

Windows interface, all data stored in MS Access

PC Platform:

Win95, 98, 2000, NT4

Calibration:

Self-calibration via software.

Power supply:

No Power required (uses PC power supply)

Warranty:

1 year parts and labour

Support:

Lifetime free telephone support

For more information please contact us:

Banair Electronic Engineers

48 Ivy Road

Southampton

Hants SO17 2JN

UK.

Tel: (+44) 023 8032 4334

Fax: (+44) 023 8032 4332

Email: info@banair.co.uk